



TWIN FALLS

254 River Vista Place
(208) 734-7333

BURLEY

1259 Overland Ave
(208) 647-0184

BELLEVUE

733 N. Main Street
Suite E
(208) 788-0777

Physical,
Occupational,
&
Speech
Therapy

*providing
one-on-one
individualized care
for adult and pediatric
clients*

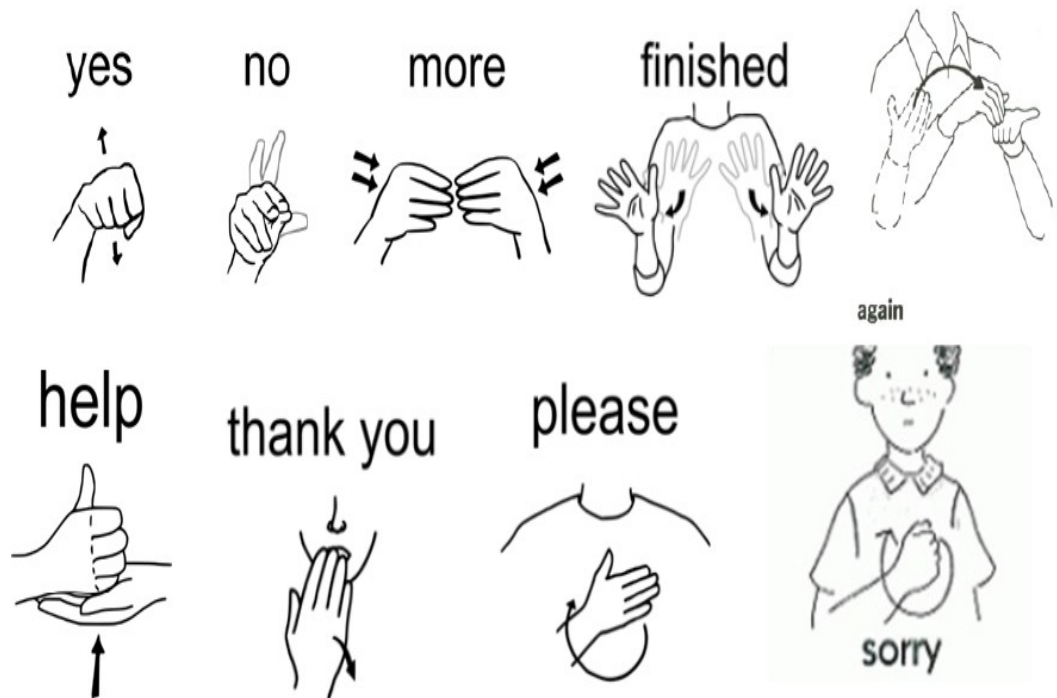
Using Sign Language With Children

Sign language can be a very useful tool for communication with children and babies even if they are able to hear perfectly fine. It gives the child a way to express themselves when they otherwise would not be able to. It can help to decrease frustration in the child as well as for others communicating with them.

American Sign Language (ASL): ASL is the official language used by the deaf community in the US. ASL as a language has a distinct syntax and sentence structure that differ from Signed English (using ASL signs in the same sentence structure as spoken English). In addition to being part of a distinct language, ASL signs can be used individually to convey wants, needs or ideas. www.signingsavvy.com offers an extensive ASL video dictionary for further reference.

Baby Signs: Baby Signs is a language program based loosely on ASL. Many of the signs are taken directly from ASL while many others are made especially for the program to be easier for babies and toddlers to sign. There are books and programs available if you wish to learn Baby Signs with your child. More information can be found at: www.babysigns.com

Common ASL signs for families/therapists:



Treating You To A Better Life

www.primarytherapysource.com